

# GLITTER™

TORGINOL® GLITTER is manufactured using premium polyester film and precision cutting technology to create highly-reflective particles. This unique collection of decorative elements creates a natural flow of energy in your environment and allows you to accent, highlight, and influence the expression of specific design features in your décor.

GLITTER is available in two standardized variations based on unique size and shape characteristics, including 0.125" random-cut GLITTER FLAKE and 0.008" hexagonal-cut GLITTER POWDER.

Enhance your next flooring project by blending random cut GLITTER FLAKE with TORGINOL® FLAKE to accentuate a design. Or use GLITTER POWDER to heavily load a clear resin to create a monolithic sparkle surface or disperse small amounts of GLITTER POWDER into a clear topcoat to create a sparkle effect throughout the surface.

## PERFORMANCE SPECIFICATIONS

<b>Color (<math>\Delta \leq 0.5</math>)</b>	Visual Consistency (ASTM E1808)	Pass
<b>Dry Film Thickness (~2 mils)</b>	Micrometer (ASTM D1005)	Pass
<b>Shape (random/hexagonal)</b>	Visual Evaluation	Pass
<b>Odor (odorless)</b>	Olfactory Evaluation (ASTM D1296)	Pass
<b>Size Distribution (normal)</b>	Normal Sieve Analysis (ASTM C136)	Pass

## COVERAGE RATE GUIDELINES

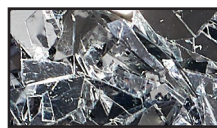
Application Type	Recommended Load	Approximate Coverage
GLITTER FLAKE FLAKE Blend Accent	3-7% of total weight	5-7 SF / LB
GLITTER POWDER Clear Topcoat Enhancer	25-100 grams/gallon	100 + SF / gallon
GLITTER POWDER Monolithic Glitter Floor	1LB per gallon	50-100 SF / gallon

**DISCLAIMER:** Coverage rates vary depending on design preferences and application techniques.

## GLITTER FLAKE (0.125" RANDOM-CUT)



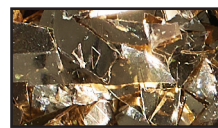
G1010  
WHITE



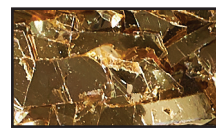
G1020  
SILVER



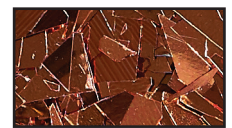
G1030  
GUNMETAL



G1040  
BRONZE



G1050  
GOLD



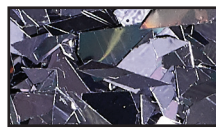
G1060  
COPPER



G1070  
BROWN



G1080  
BLACK



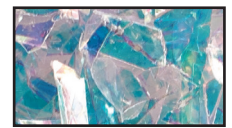
G1090  
MIDNIGHT



G2010  
PEARL



G2020  
HOLOGRAPHIC



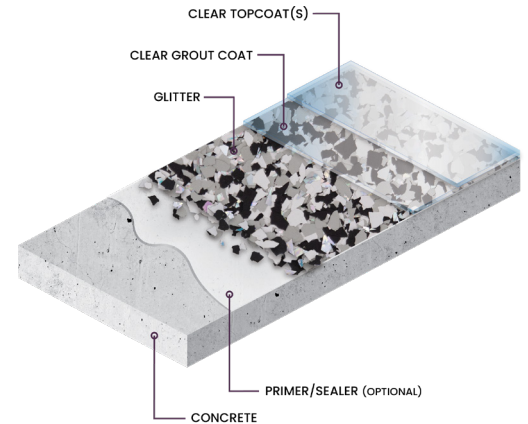
G2030  
CRYSTALLINA

**DISCLAIMER:** The information set forth in this Product Data Sheet represents typical properties of the product described; the information and the typical values are not specifications. Torginol, Inc. makes no representation or warranty concerning the products, expressed or implied, by this Product Data Sheet.



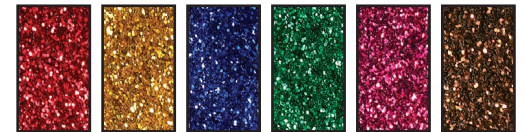
4617 South Taylor Drive  
Sheboygan, WI 53081 | USA  
(920) 694-4800  
service@torginol.com | www.torginol.com

## TYPICAL GLITTER SYSTEM

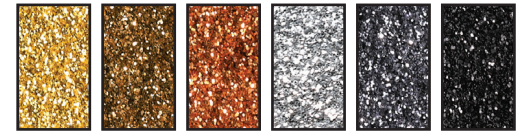


\* For best results, a grout coat and sanding step is recommended prior to applying the final topcoat(s).

## GLITTER POWDER (0.008" HEX-CUT)



G6050 RED G6060 YELLOW G6065 BLUE G6055 GREEN G6075 FUCHSIA G6040 BROWN



G6030 GOLD G6025 BRONZE G6035 COPPER G6010 SILVER G6020 GUNMETAL G6045 BLACK